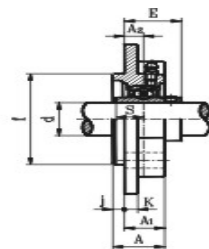
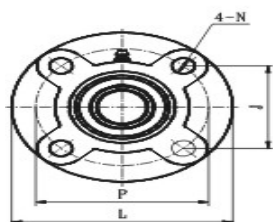
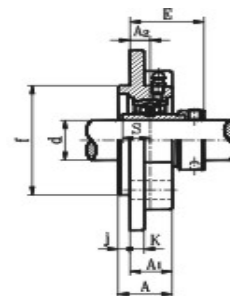
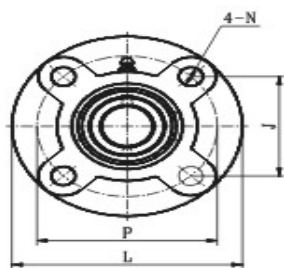


Galore Way



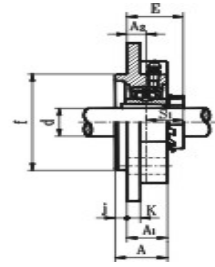
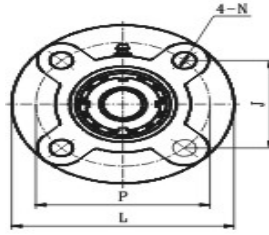
1

| 带座轴承 代 号 | 轴径 d mm | 外形尺寸 (mm) | | | | | | | | | | | | 螺栓 规格 | 轴承 代号 | 座代号 | 重量 Kg |
|-------------|---------------|-----------|-----|----|------|------|----|----|----|-------|-----|------|------|----------|----------|-------|----------|
| | | L | P | A2 | A1 | A | j | K | N | J | f | S1 | E | | | | |
| | | UCFC201S | 12 | 90 | 70 | 10 | 19 | 23 | 4 | 5 | 10 | 49.5 | 55 | | | | |
| UCFC202S | 15 | UC202S | | | | | | | | | | | | | | | |
| UCFC203S | 17 | UC203S | | | | | | | | | | | | | | | |
| UCFC201 | 12 | 100 | 78 | 10 | 20.5 | 25.5 | 5 | 6 | 12 | 55.1 | 62 | 12.7 | 28.3 | M10 | UC201 | FC204 | 0.79 |
| UCFC202 | 15 | | | | | | | | | | | | | | UC202 | | |
| UCFC203 | 17 | | | | | | | | | | | | | | UC203 | | |
| UCFC204 | 20 | | | | | | | | | | | | | | UC204 | | |
| UCFC205 | 25 | 115 | 90 | 10 | 21 | 27 | 6 | 7 | 12 | 63.6 | 70 | 14.3 | 29.7 | M10 | UC205 | FC205 | 0.96 |
| UCFC206 | 30 | 125 | 100 | 10 | 23 | 31 | 8 | 8 | 12 | 70.7 | 80 | 15.9 | 32.2 | M10 | UC206 | FC206 | 1.37 |
| UCFC207 | 35 | 135 | 110 | 11 | 26 | 34 | 8 | 9 | 14 | 77.8 | 90 | 17.5 | 36.4 | M12 | UC207 | FC207 | 1.7 |
| UCFC208 | 40 | 145 | 120 | 11 | 26 | 36 | 10 | 9 | 14 | 84.8 | 100 | 19 | 41.2 | M12 | UC208 | FC208 | 2 |
| UCFC209 | 45 | 160 | 132 | 10 | 26 | 38 | 12 | 10 | 16 | 93.3 | 105 | 19 | 40.2 | M14 | UC209 | FC209 | 2.7 |
| UCFC210 | 50 | 165 | 138 | 10 | 28 | 40 | 12 | 14 | 16 | 97.6 | 110 | 19 | 42.6 | M14 | UC210 | FC210 | 2.9 |
| UCFC211 | 55 | 185 | 150 | 13 | 30 | 42 | 12 | 13 | 19 | 106.1 | 125 | 22.2 | 46.4 | M16 | UC211 | FC211 | 4.2 |
| UCFC212 | 60 | 195 | 160 | 17 | 36 | 48 | 12 | 15 | 19 | 113.1 | 135 | 25.4 | 56.7 | M16 | UC212 | FC212 | 4.94 |
| UCFC213 | 65 | 205 | 170 | 16 | 35 | 49 | 14 | 15 | 19 | 120.2 | 145 | 25.4 | 55.7 | M16 | UC213 | FC213 | 5.7 |
| UCFC214 | 70 | 215 | 177 | 17 | 38 | 52 | 14 | 16 | 19 | 125.1 | 150 | 30.2 | 61.4 | M16 | UC214 | FC214 | 6.8 |
| UCFC215 | 75 | 220 | 184 | 18 | 39 | 55 | 16 | 17 | 19 | 130.1 | 160 | 33.3 | 62.5 | M16 | UC215 | FC215 | 7.2 |
| UCFC216 | 80 | 240 | 200 | 18 | 42 | 58 | 16 | 18 | 23 | 141.4 | 170 | 33.3 | 67.3 | M20 | UC216 | FC216 | 8.7 |
| UCFC217 | 85 | 250 | 208 | 18 | 45 | 63 | 18 | 20 | 23 | 147.1 | 180 | 34.1 | 69.6 | M20 | UC217 | FC217 | 10.3 |
| UCFC218 | 90 | 265 | 220 | 22 | 50 | 68 | 18 | 20 | 23 | 155.5 | 190 | 39.7 | 78.3 | M20 | UC218 | FC218 | 13.5 |



| 带座轴承 代 号 | 轴径 | 外形尺寸 (mm) | | | | | | | | | | | | 螺栓 规格 | 轴承 代号 | 座代号 | 重量 Kg |
|-------------|----|-----------|-----|----|------|------|----|----|----|-------|-----|------|------|----------|----------|-------|----------|
| | d | L | P | A2 | A1 | A | j | K | N | J | f | S1 | E | | | | |
| | mm | | | | | | | | | | | | | | | | |
| NAFC201S | 12 | 90 | 70 | 10 | 19 | 23 | 4 | 5 | 10 | 49.5 | 55 | 13.9 | 33.4 | M8 | NA201S | FC203 | 0.6 |
| NAFC202S | 15 | | | | | | | | | | | | | | NA202S | | |
| NAFC203S | 17 | | | | | | | | | | | | | | NA203S | | |
| NAFC201 | 12 | 100 | 78 | 10 | 20.5 | 25.5 | 5 | 6 | 12 | 55.1 | 62 | 17 | 36.5 | M10 | NA201 | FC204 | 0.83 |
| NAFC202 | 15 | | | | | | | | | | | | | | NA202 | | |
| NAFC203 | 17 | | | | | | | | | | | | | | NA203 | | |
| NAFC204 | 20 | | | | | | | | | | | | | | NA204 | | |
| NAFC205 | 25 | 115 | 90 | 10 | 21 | 27 | 6 | 7 | 12 | 63.6 | 70 | 17.4 | 36.9 | M10 | NA205 | FC205 | 1.1 |
| NAFC206 | 30 | 125 | 100 | 10 | 23 | 31 | 8 | 8 | 12 | 70.7 | 80 | 18.2 | 40.1 | M10 | NA206 | FC206 | 1.5 |
| NAFC207 | 35 | 135 | 110 | 11 | 26 | 34 | 8 | 9 | 14 | 77.8 | 90 | 18.8 | 43.3 | M12 | NA207 | FC207 | 1.8 |
| NAFC208 | 40 | 145 | 120 | 11 | 26 | 36 | 10 | 9 | 14 | 84.8 | 100 | 21.4 | 45.9 | M12 | NA208 | FC208 | 2.2 |
| NAFC209 | 45 | 160 | 132 | 10 | 26 | 38 | 12 | 10 | 16 | 93.3 | 105 | 21.4 | 44.9 | M14 | NA209 | FC209 | 2.8 |
| NAFC210 | 50 | 165 | 138 | 10 | 28 | 40 | 12 | 14 | 16 | 97.6 | 110 | 24.6 | 48.1 | M14 | NA210 | FC210 | 3.3 |
| NAFC211 | 55 | 185 | 150 | 13 | 30 | 42 | 12 | 13 | 19 | 106.1 | 125 | 27.7 | 56.6 | M16 | NA211 | FC211 | 4.5 |
| NAFC212 | 60 | 195 | 160 | 17 | 36 | 48 | 12 | 15 | 19 | 113.1 | 135 | 30.9 | 63.8 | M16 | NA212 | FC212 | 5.7 |
| NAFC213 | 65 | 205 | 170 | 16 | 35 | 49 | 14 | 15 | 19 | 120.2 | 145 | 34.1 | 67.6 | M16 | NA213 | FC213 | 6.5 |
| NAFC214 | 70 | 215 | 177 | 17 | 38 | 52 | 14 | 16 | 19 | 125.1 | 150 | 34.1 | 68.6 | M16 | NA214 | FC214 | 7.2 |
| NAFC215 | 75 | 220 | 184 | 18 | 39 | 55 | 16 | 17 | 19 | 130.1 | 160 | 37.3 | 72.8 | M16 | NA215 | FC215 | 8 |
| NAFC216 | 80 | 240 | 200 | 18 | 42 | 58 | 16 | 18 | 23 | 141.4 | 170 | 37.3 | 75.9 | M20 | NA216 | FC216 | 9.53 |
| NAFC217 | 85 | 250 | 208 | 18 | 45 | 63 | 18 | 20 | 23 | 147.1 | 180 | 23.4 | 67.8 | M20 | NA217 | FC217 | |
| NAFC218 | 90 | 265 | 220 | 22 | 50 | 68 | 18 | 20 | 23 | 155.5 | 190 | 24.5 | 70 | M20 | NA218 | FC218 | |

Galore Way

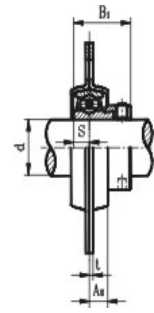
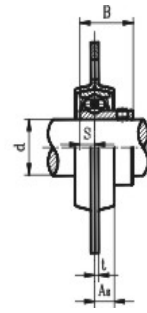
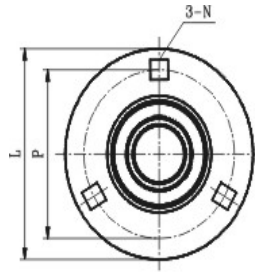


3

| 带座轴承 代 号 | 轴径 | 外形尺寸 (mm) | | | | | | | | | | | | 螺栓 规格 | 轴承 代号 | 座代号 | 重量 Kg |
|-------------|----|-----------|-----|----|----|----|----|----|----|-------|-----|------|------|----------|----------|-------|----------|
| | d | L | P | A2 | A1 | A | j | K | N | J | f | S1 | E | | | | |
| | mm | | | | | | | | | | | | | | | | |
| UKFC205 | 20 | 115 | 90 | 10 | 21 | 27 | 6 | 7 | 12 | 63.6 | 70 | 18.5 | 28.5 | M10 | UK205 | H2305 | 0.98 |
| UKFC206 | 25 | 125 | 100 | 10 | 23 | 31 | 8 | 8 | 12 | 70.7 | 80 | 20.5 | 30.5 | M10 | UK206 | H2306 | 1.2 |
| UKFC207 | 30 | 135 | 110 | 11 | 26 | 34 | 8 | 9 | 14 | 77.8 | 90 | 22.5 | 33.5 | M12 | UK207 | H2307 | 1.7 |
| UKFC208 | 35 | 145 | 120 | 11 | 26 | 36 | 10 | 9 | 14 | 84.8 | 100 | 24.5 | 35.5 | M12 | UK208 | H2308 | 2 |
| UKFC209 | 40 | 160 | 132 | 10 | 26 | 38 | 12 | 10 | 16 | 93.3 | 105 | 26 | 36 | M14 | UK209 | H2309 | 2.7 |
| UKFC210 | 45 | 165 | 138 | 10 | 28 | 40 | 12 | 14 | 16 | 97.6 | 110 | 27.5 | 37.5 | M16 | UK210 | H2310 | 3 |
| UKFC211 | 50 | 185 | 150 | 13 | 30 | 42 | 12 | 13 | 19 | 106.1 | 125 | 28.5 | 41.5 | M16 | UK211 | H2311 | 4.2 |
| UKFC212 | 55 | 195 | 160 | 17 | 36 | 48 | 12 | 15 | 19 | 113.1 | 135 | 31 | 48 | M16 | UK212 | H2312 | 4.9 |
| UKFC213 | 60 | 205 | 170 | 16 | 35 | 49 | 14 | 15 | 19 | 120.2 | 145 | 32 | 48 | M16 | UK213 | H2313 | 5.6 |
| UKFC215 | 65 | 220 | 184 | 18 | 39 | 55 | 16 | 17 | 19 | 130.1 | 160 | 35.5 | 53.5 | M16 | UK215 | H2315 | 7.5 |
| UKFC216 | 70 | 240 | 200 | 18 | 42 | 58 | 16 | 18 | 23 | 141.4 | 170 | 39 | 57 | M20 | UK216 | H2316 | 8.9 |
| UKFC217 | 75 | 250 | 208 | 18 | 45 | 63 | 18 | 20 | 23 | 147.1 | 180 | 40 | 58 | M20 | UK217 | H2317 | 10.4 |
| UKFC218 | 80 | 265 | 220 | 22 | 50 | 68 | 18 | 20 | 23 | 155.5 | 190 | 42 | 64 | M20 | UK218 | H2318 | 13.3 |

Galore Way

4



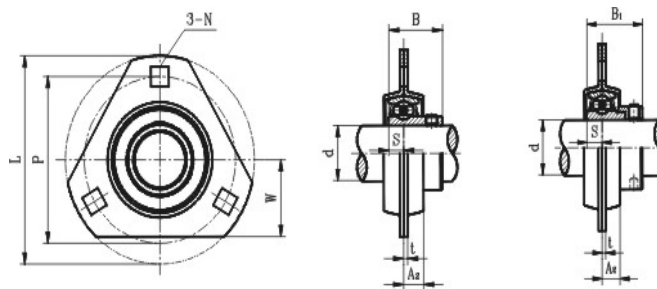
SBPF2 带顶丝

SAPF2 带偏心套

| 带座轴承 代 号 | 轴径 | 外形尺寸 (mm) | | | | | | | 螺栓 规格 | | 轴承 代号 | 座代号 | 重量 Kg |
|-------------|----|-----------|-----|----|-----|------|-----|----|----------|-----|----------|-------|----------|
| | d | L | P | A2 | t | N① | S | B | | | | | |
| | mm | | | | | | | | | | | | |
| SBPF201 | 12 | 82 | 64 | 7 | 2 | 7.5 | 6 | 22 | 1/4 | M6 | SB201 | PF203 | 0.27 |
| SBPF202 | 15 | | | | | | | | | | SB202 | | |
| SBPF203 | 17 | | | | | | | | | | SB203 | | |
| SBPF204 | 20 | 91 | 71 | 8 | 2 | 9 | 7 | 25 | 5/16 | M6 | SB204 | PF204 | 0.3 |
| SBPF205 | 25 | 95 | 76 | 9 | 2 | 9 | 7.5 | 27 | 5/16 | M8 | SB205 | PF205 | 0.38 |
| SBPF206 | 30 | 113 | 90 | 9 | 2.5 | 10.5 | 8 | 30 | 3/8 | M10 | SB206 | PF206 | 0.62 |
| SBPF207 | 35 | 122 | 100 | 10 | 2.5 | 10.5 | 8.5 | 32 | 3/8 | M10 | SB207 | PF207 | 0.82 |
| SBPF208 | 40 | 148 | 119 | 12 | 3.5 | 13.5 | 9 | 34 | 1/2 | M12 | SB208 | PF208 | 1.1 |

| 带座轴承 代 号 | 轴径 | 外形尺寸 (mm) | | | | | | | 螺栓 规格 | | 轴承 代号 | 座代号 | 重量 Kg |
|-------------|----|-----------|-----|----|-----|------|-----|------|----------|-----|----------|-------|----------|
| | d | L | P | A2 | t | N① | S | B1 | | | | | |
| | mm | | | | | | | | | | | | |
| SAPF201 | 12 | 82 | 64 | 7 | 2 | 7.5 | 6.5 | 28.6 | 1/4 | M6 | SA201 | PF203 | 0.29 |
| SAPF202 | 15 | | | | | | | | | | SA202 | | |
| SAPF203 | 17 | | | | | | | | | | SA203 | | |
| SAPF204 | 20 | 91 | 71 | 8 | 2 | 9 | 7.5 | 30.9 | 5/16 | M8 | SA204 | PF204 | 0.31 |
| SAPF205 | 25 | 95 | 76 | 9 | 2 | 9 | 7.5 | 30.9 | 5/16 | M8 | SA205 | PF205 | 0.41 |
| SAPF206 | 30 | 113 | 90 | 9 | 2.5 | 10.5 | 9 | 35.7 | 3/8 | M10 | SA206 | PF206 | 0.67 |
| SAPF207 | 35 | 122 | 100 | 10 | 2.5 | 10.5 | 9.5 | 38.9 | 3/8 | M10 | SA207 | PF207 | 0.87 |
| SAPF208 | 40 | 148 | 119 | 12 | 3.5 | 13.5 | 11 | 43.7 | 1/2 | M12 | SA208 | PF208 | 1.3 |

Galore Way



5

SBPFT2 止ねじ式 SAPFT2 偏心カバー式

| ユニットの 呼び番号 | 軸径 | 寸法 (mm) | | | | | | | | ボルト 規格 | | 軸受 型式 | 台座 型式 | 重量 Kg |
|---------------|----|---------|-----|----|-----|------|----|-----|----|-----------|-----|----------|----------|----------|
| | d | L | P | A2 | t | N | W | S | B | | | | | |
| | mm | | | | | | | | | | | | | |
| SBPFT201 | 12 | 82 | 64 | 7 | 2 | 7.5 | 29 | 6 | 22 | 1/4 | M6 | SB201 | PFT203 | 0.27 |
| SBPFT202 | 15 | | | | | | | | | | | SB202 | | |
| SBPFT203 | 17 | | | | | | | | | | | SB203 | | |
| SBPFT204 | 20 | 91 | 71 | 8 | 2 | 9 | 33 | 7 | 25 | 5/16 | M8 | SB204 | PFT204 | 0.3 |
| SBPFT205 | 25 | 95 | 76 | 9 | 2 | 9 | 35 | 7.5 | 27 | 5/16 | M8 | SB205 | PFT205 | 0.38 |
| SBPFT206 | 30 | 113 | 90 | 9 | 2.5 | 10.5 | 38 | 8 | 30 | 3/8 | M10 | SB206 | PFT206 | 0.62 |
| SBPFT207 | 35 | 122 | 100 | 10 | 2.5 | 10.5 | 45 | 8.5 | 32 | 3/8 | M10 | SB207 | PFT207 | 0.82 |

| ユニットの 呼び番号 | 軸径 | 寸法 (mm) | | | | | | | | ボルト 規格 | | 軸受 型式 | 台座 型式 | 重量 Kg |
|---------------|----|---------|-----|----|-----|------|----|-----|------|-----------|-----|----------|----------|----------|
| | d | L | P | A2 | t | N | W | S | B1 | | | | | |
| | mm | | | | | | | | | | | | | |
| SAPFT201 | 12 | 82 | 64 | 7 | 2 | 7.5 | 29 | 6.5 | 28.6 | 1/4 | M6 | SA201 | PFT203 | 0.29 |
| SAPFT202 | 15 | | | | | | | | | | | SA202 | | |
| SAPFT203 | 17 | | | | | | | | | | | SA203 | | |
| SAPFT204 | 20 | 91 | 71 | 8 | 2 | 9 | 33 | 7.5 | 30.9 | 5/16 | M8 | SA204 | PFT204 | 0.31 |
| SAPFT205 | 25 | 95 | 76 | 9 | 2 | 9 | 35 | 7.5 | 30.9 | 5/16 | M8 | SA205 | PFT205 | 0.41 |
| SAPFT206 | 30 | 113 | 90 | 9 | 2.5 | 10.5 | 38 | 9 | 35.7 | 3/8 | M10 | SA206 | PFT206 | 0.67 |
| SAPFT207 | 35 | 122 | 100 | 10 | 2.5 | 10.5 | 45 | 9.5 | 38.9 | 3/8 | M10 | SA207 | PFT207 | 0.87 |