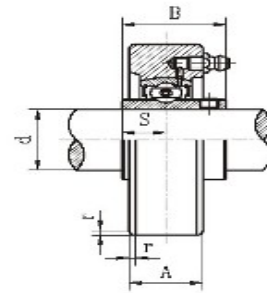
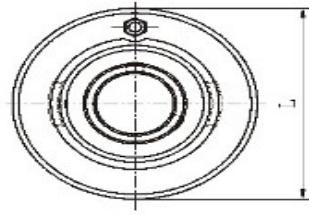


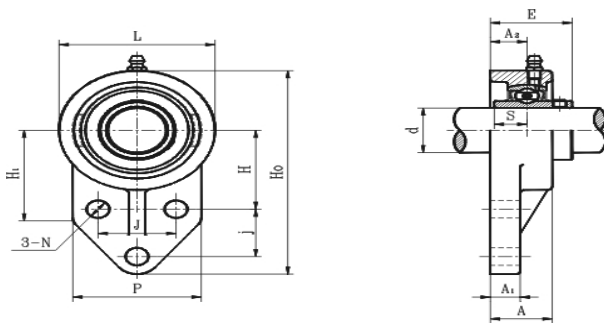
Galore Way



1

| ユニットの 呼び番号 | 軸径 | 寸法 (mm) | | | | | 軸受 型式 | 台座 型式 | 重量 Kg |
|---------------|------|---------|----|------|------|-----|----------|----------|----------|
| | d | L | A | S | B | r | | | |
| | (mm) | | | | | | | | |
| UCC201S | 12 | 67 | 20 | 11.5 | 27.4 | 1.5 | UC201S | C203 | 0.4 |
| UCC202S | 15 | | | | | | UC202S | | |
| UCC203S | 17 | | | | | | UC203S | | |
| UCC201 | 12 | 72 | 20 | 12.7 | 31 | 1.5 | UC201 | C204 | 0.53 |
| UCC202 | 15 | | | | | | UC202 | | |
| UCC203 | 17 | | | | | | UC203 | | |
| UCC204 | 20 | | | | | | UC204 | | |
| UCC205 | 25 | 80 | 22 | 14.3 | 34 | 1.5 | UC205 | C205 | 0.65 |
| UCC206 | 30 | 85 | 27 | 15.9 | 38.1 | 1.5 | UC206 | C206 | 0.82 |
| UCC207 | 35 | 90 | 28 | 17.5 | 42.9 | 2 | UC207 | C207 | 0.94 |
| UCC208 | 40 | 100 | 30 | 19 | 49.2 | 2 | UC208 | C208 | 1.3 |
| UCC209 | 45 | 110 | 31 | 19 | 49.2 | 2 | UC209 | C209 | 1.6 |
| UCC210 | 50 | 120 | 33 | 19 | 51.6 | 2 | UC210 | C210 | 2 |
| UCC211 | 55 | 125 | 35 | 22.2 | 55.6 | 2.5 | UC211 | C211 | 2.2 |
| UCC212 | 60 | 130 | 38 | 25.4 | 65.1 | 2.5 | UC212 | C212 | 2.6 |
| UCC213 | 65 | 140 | 40 | 25.4 | 65.1 | 2.5 | UC213 | C213 | 3.1 |

Galore Way

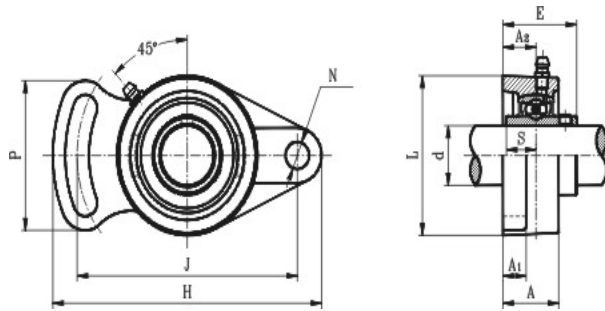


2

| ユニットの 呼び番号 | 軸径 d (mm) | 寸法 (mm) | | | | | | | | | | | | | ボルト 規格 | 軸受 型式 | 台座 型式 | 重量 Kg |
|---------------|-----------------|----------|-----|-----|-----|----|----|----|----|----|----|----|----|----|-----------|----------|----------|----------|
| | | H0 | L | H1 | P | H | j | J | A | A1 | A2 | N | E | S | | | | |
| | | UCFB201S | 12 | 104 | 55 | 50 | 49 | 40 | 27 | 30 | 24 | 10 | 14 | 10 | | | | |
| UCFB202S | 15 | UC202S | | | | | | | | | | | | | | | | |
| UCFB203S | 17 | UC203S | | | | | | | | | | | | | | | | |
| UCFB201 | 12 | 109 | 60 | 52 | 52 | 42 | 27 | 32 | 26 | 11 | 15 | 10 | 33 | 13 | M8 | UC201 | FB204 | 0.65 |
| UCFB202 | 15 | | | | | | | | | | | | | | | UC202 | | |
| UCFB203 | 17 | | | | | | | | | | | | | | | UC203 | | |
| UCFB204 | 20 | | | | | | | | | | | | | | | UC204 | | |
| UCFB205 | 25 | 116 | 68 | 52 | 56 | 45 | 27 | 34 | 27 | 13 | 16 | 10 | 36 | 14 | M8 | UC205 | FB205 | 0.69 |
| UCFB206 | 30 | 132 | 80 | 55 | 65 | 50 | 29 | 40 | 31 | 13 | 18 | 10 | 40 | 16 | M8 | UC206 | FB206 | 0.93 |
| UCFB207 | 35 | 144 | 90 | 62 | 70 | 55 | 32 | 46 | 33 | 14 | 19 | 10 | 44 | 18 | M8 | UC207 | FB207 | 1.3 |
| UCFB208 | 40 | 164 | 100 | 72 | 78 | 60 | 41 | 50 | 35 | 17 | 21 | 12 | 51 | 19 | M10 | UC208 | FB208 | 1.8 |
| UCFB209 | 45 | 175 | 108 | 76 | 80 | 65 | 43 | 54 | 38 | 16 | 22 | 12 | 52 | 19 | M10 | UC209 | FB209 | 2 |
| UCFB210 | 50 | 184 | 114 | 82 | 86 | 68 | 46 | 58 | 39 | 16 | 22 | 12 | 55 | 19 | M10 | UC210 | FB210 | 2.3 |
| UCFB211 | 55 | 207 | 128 | 86 | 90 | 78 | 50 | 62 | 43 | 18 | 25 | 14 | 58 | 22 | M12 | UC211 | FB211 | |
| UCFB212 | 60 | 224 | 140 | 90 | 94 | 84 | 55 | 66 | 48 | 19 | 29 | 14 | 69 | 25 | M12 | UC212 | FB212 | |
| UCFB213 | 65 | 244 | 152 | 95 | 102 | 92 | 60 | 70 | 49 | 20 | 30 | 14 | 70 | 25 | M12 | UC213 | FB213 | |

Galore Way

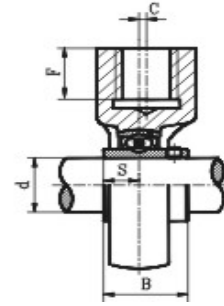
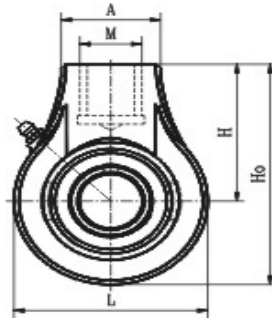
3



| ユニットの 呼び番号 | 軸径 | 寸法 (mm) | | | | | | | | | | ボルト 規格 | 軸受 型式 | 台座 型式 | 重量 Kg |
|---------------|------|---------|-----|-----|-----|----|----|----|----|----|----|-----------|----------|----------|----------|
| | d | H | J | L | P | A1 | A2 | A | N | E | S | | | | |
| | (mm) | | | | | | | | | | | | | | |
| UCFA201S | 12 | 95 | 75 | 57 | 47 | 9 | 13 | 22 | 10 | 29 | 12 | M8 | UC201S | FA203 | 0.37 |
| UCFA202S | 15 | | | | | | | | | | | | UC202S | | |
| UCFA203S | 17 | | | | | | | | | | | | UC203S | | |
| UCFA201 | 12 | 98 | 78 | 59 | 50 | 11 | 14 | 24 | 10 | 32 | 13 | M8 | UC201 | FA204 | 0.48 |
| UCFA202 | 15 | | | | | | | | | | | | UC202 | | |
| UCFA203 | 17 | | | | | | | | | | | | UC203 | | |
| UCFA204 | 20 | | | | | | | | | | | | UC204 | | |
| UCFA205 | 25 | 122 | 96 | 70 | 64 | 13 | 16 | 27 | 12 | 36 | 14 | M8 | UC205 | FA205 | 0.69 |
| UCFA206 | 30 | 141 | 115 | 80 | 68 | 14 | 18 | 31 | 12 | 40 | 16 | M8 | UC206 | FA206 | 1 |
| UCFA207 | 35 | 155 | 128 | 92 | 75 | 15 | 19 | 33 | 13 | 44 | 18 | M8 | UC207 | FA207 | 1.5 |
| UCFA208 | 40 | 171 | 144 | 105 | 84 | 14 | 21 | 38 | 13 | 51 | 19 | M10 | UC208 | FA208 | 1.8 |
| UCFA209 | 45 | 178 | 146 | 108 | 88 | 16 | 22 | 38 | 16 | 52 | 19 | M10 | UC209 | FA209 | 2.1 |
| UCFA210 | 50 | 188 | 155 | 114 | 92 | 16 | 22 | 39 | 16 | 55 | 19 | M10 | UC210 | FA210 | 2.3 |
| UCFA211 | 55 | 216 | 182 | 128 | 102 | 18 | 25 | 43 | 16 | 58 | 22 | M12 | UC211 | FA211 | 3.6 |
| UCFA212 | 60 | 238 | 202 | 140 | 122 | 19 | 29 | 48 | 18 | 69 | 25 | M12 | UC212 | FA212 | |
| UCFA213 | 65 | 248 | 210 | 152 | 126 | 20 | 30 | 49 | 18 | 70 | 25 | M12 | UC213 | FA213 | |

Galore Way

4



| ユニットの 呼び番号 | 軸径 | 寸法 (mm) | | | | | | | | | 軸受 型式 | 台座 型式 | 重量 Kg |
|---------------|------|---------|-----|-----|-----|----|----|--------|----|------|----------|----------|----------|
| | d | H0 | L | C | H | A | F | M | B | S | | | |
| | (mm) | | | | | | | | | | | | |
| UCHA201S | 12 | 88.5 | 57 | 0 | 60 | 38 | 19 | G3/4 | 27 | 11.5 | UC201S | HA203 | 0.6 |
| UCHA202S | 15 | | | | | | | | | | UC202S | | |
| UCHA203S | 17 | | | | | | | | | | UC203S | | |
| UCHA201 | 12 | 96 | 64 | 0 | 64 | 40 | 19 | G3/4 | 31 | 12.7 | UC201 | HA204 | 0.73 |
| UCHA202 | 15 | | | | | | | | | | UC202 | | |
| UCHA203 | 17 | | | | | | | | | | UC203 | | |
| UCHA204 | 20 | | | | | | | | | | UC204 | | |
| UCHA205 | 25 | 103 | 78 | 0 | 64 | 40 | 19 | G3/4 | 34 | 14.3 | UC205 | HA205 | 0.88 |
| UCHA206 | 30 | 103 | 78 | 0 | 64 | 40 | 19 | G3/4 | 38 | 15.9 | UC206 | HA206 | 1 |
| UCHA207 | 35 | 116 | 92 | 0 | 70 | 40 | 19 | G3/4 | 43 | 17.5 | UC207 | HA207 | 1.2 |
| UCHA208 | 40 | 121 | 96 | 2 | 73 | 40 | 19 | G3/4 | 49 | 19 | UC208 | HA208 | 1.3 |
| UCHA209 | 45 | 136 | 108 | 5 | 82 | 48 | 21 | G1 | 49 | 19 | UC209 | HA209 | 1.8 |
| UCHA210 | 50 | 140.5 | 115 | 5 | 83 | 48 | 21 | G1 | 52 | 19 | UC210 | HA210 | 2.1 |
| UCHA211 | 55 | 150 | 126 | 7 | 87 | 60 | 24 | G1-1/4 | 56 | 22.2 | UC211 | HA211 | 2.8 |
| UCHA212 | 60 | 173 | 142 | 9 | 102 | 60 | 28 | G1-1/4 | 65 | 25.4 | UC212 | HA212 | 3.9 |
| UCHA213 | 65 | 200 | 166 | 9.5 | 117 | 70 | 32 | G1-1/2 | 65 | 25.4 | UC213 | HA213 | 5.9 |
| UCHA214 | 70 | 200 | 166 | 9.5 | 117 | 70 | 32 | G1-1/2 | 75 | 30.2 | UC214 | HA214 | 5.9 |
| UCHA215 | 75 | 200 | 166 | 9.5 | 117 | 70 | 32 | G1-1/2 | 78 | 33.2 | UC215 | HA215 | 5.9 |